



REBID ADDENDUM NO. 1

September 14, 2022

**RE: Fleming County Senior Center REBID
316 Panther Avenue
Flemingsburg, Kentucky 41041
Project No. 19050**

**FROM: Brandstetter Carroll Inc.
2360 Chauvin Drive
Lexington, Kentucky 40517
Phone 859-268-1933
Fax 859-268-3341**

TO: Plan Holders

This Addendum forms a part of the REBID Construction Documents dated September 7, 2022. Each Bidder shall acknowledge receipt of this Addendum in the space provided on the Bid Form. Failure to do so may subject the Bidder to disqualification.

This Addendum consists of three (3) page and the following attachments:

- Sketches
 - REBID ADD 1.1
 - REBID ADD 1.2
 - REBID ADD 1.3

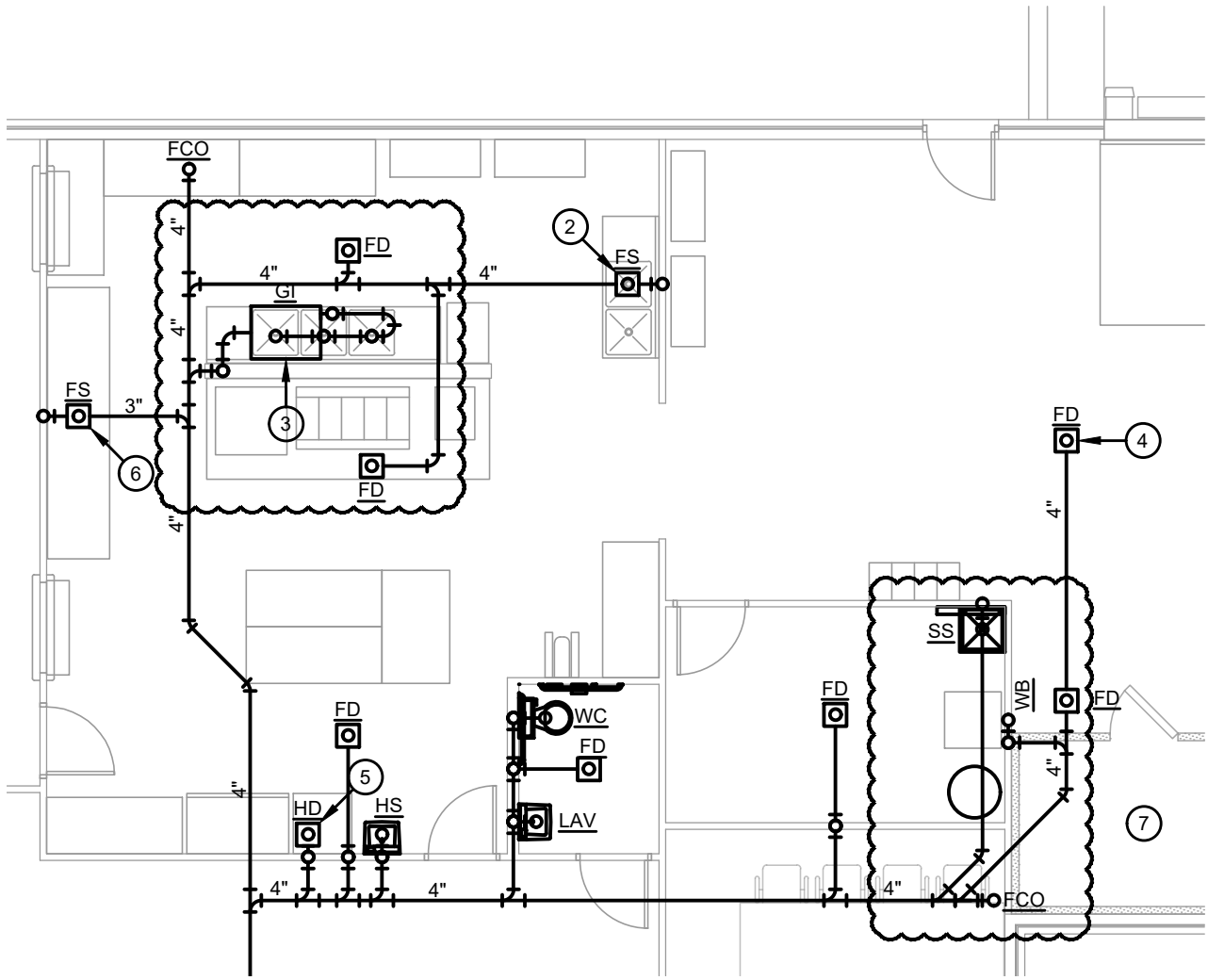
CHANGES TO SPECIFICATIONS:

1. 08113 Hollow Metal Doors & Frames
 - a. De La Fontaine may be considered an acceptable manufacturer.

CHANGES TO DRAWINGS:

1. P-101 DWV Plumbing Plan
 - a. Refer to attachment sketch Rebid Addendum 1.1 for modifications to the DWV Plumbing Plan.
2. P-501 Plumbing Schedules
 - a. Refer to attached sketches Rebid Addendum 1.2 and 1.3 for modifications to the DWV Isometric Diagram.

END OF REBID ADDENDUM NO. 1



1 PARTIAL DWV PLUMBING PLAN
P-101 SCALE: NONE

19050 09/12/2022

P-101

Fleming County Senior Center
 316 Panther Ave. Flemingsburg, KY 41041

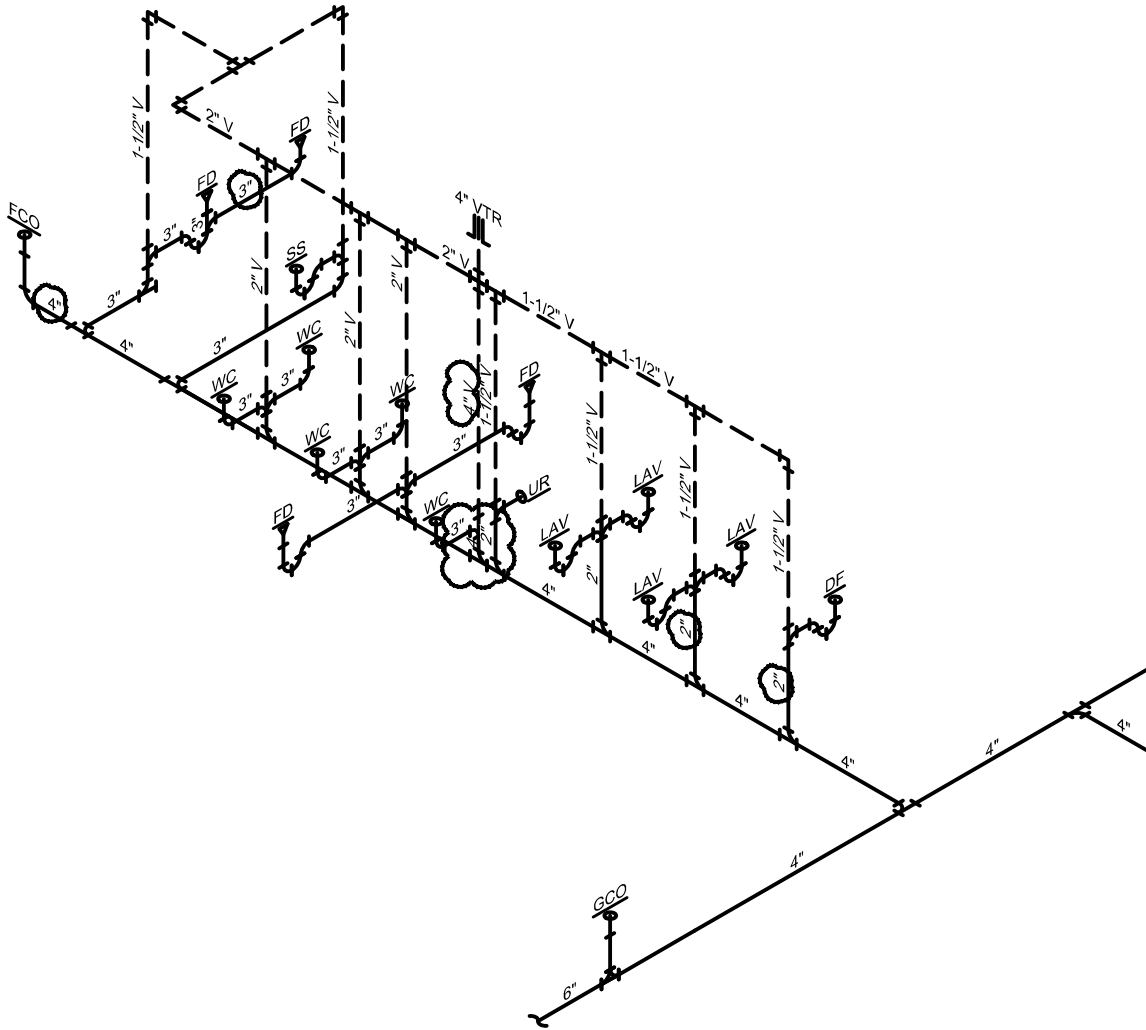
DWV Plumbing Plan Revisions



**BRANDSTETTER
 CARROLL INC**
 ARCHITECTS • ENGINEERS • PLANNERS
 2360 Chauvin Drive, Lexington, KY 40517
 p. 859.268.1933 www.brandstettercarroll.com

REBID ADDENDUM

1.1



1 PARTIAL DWV ISOMETRIC DIAGRAM
 P-501 SCALE: NONE

19050 09/12/2022

P-501

Fleming County Senior Center
 316 Panther Ave. Flemingsburg, KY 41041

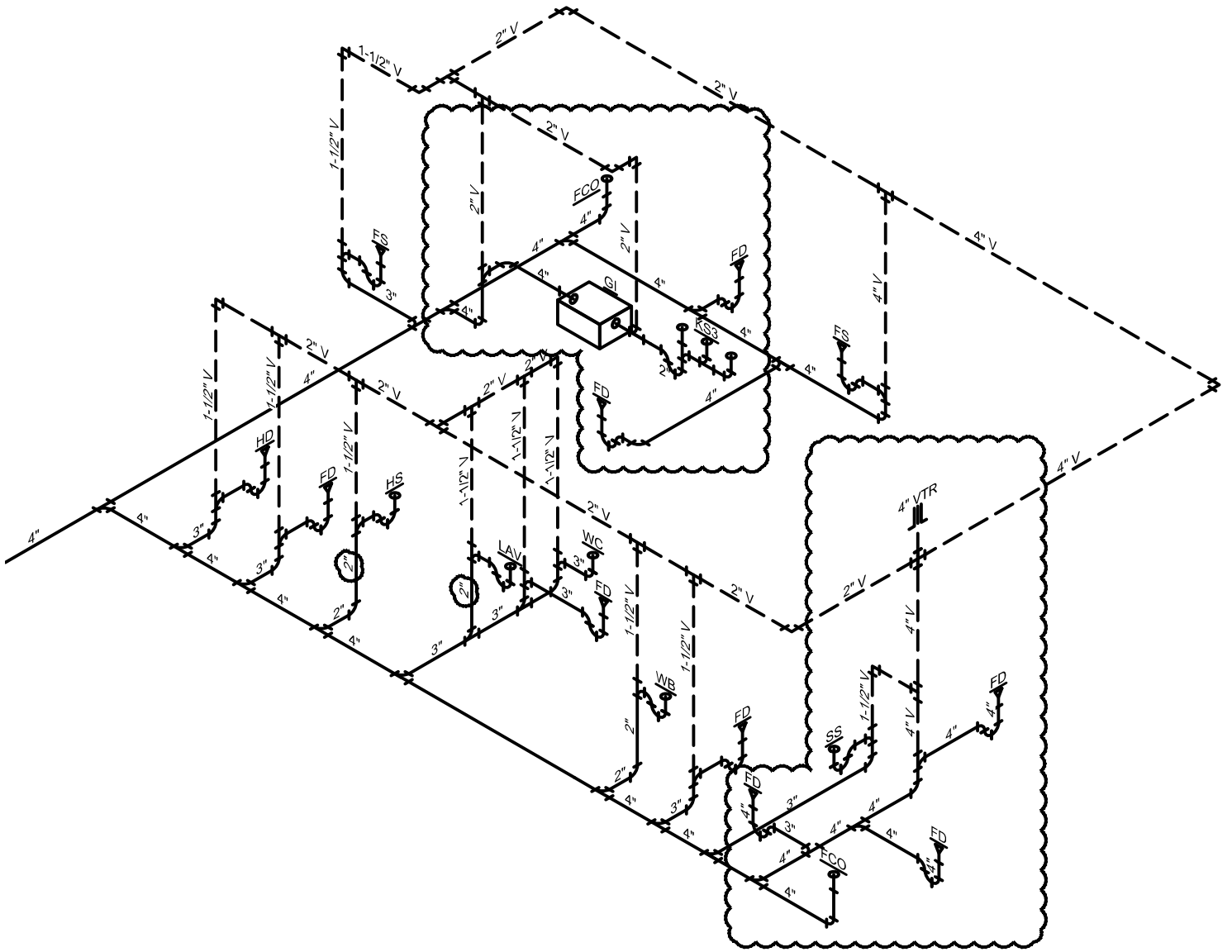
DWV Isometric Diagram



**BRANDSTETTER
 CARROLL INC**
 ARCHITECTS • ENGINEERS • PLANNERS
 2360 Chauvin Drive, Lexington, KY 40517
 p. 859.268.1933 www.brandstettercarroll.com

REBID ADDENDUM

1.2



1 PARTIAL DWV ISOMETRIC DIAGRAM
 P-501 SCALE: NONE

19050 09/12/2022

P-501

Fleming County Senior Center
 316 Panther Ave. Flemingsburg, KY 41041

DWV Isometric Diagram



**BRANDSTETTER
 CARROLL INC**
 ARCHITECTS • ENGINEERS • PLANNERS
 2360 Chauvin Drive, Lexington, KY 40517
 p. 859.268.1933 www.brandstettercarroll.com

REBID ADDENDUM

1.3