

**ADDENDUM NO. 1****August 19, 2022**

**RE: Franklin Police Department  
177 West Cedar Street  
Cincinnati, OH 45238  
Project No. 20080**

**FROM: Brandstetter Carroll Inc.  
308 East 8<sup>th</sup> Street  
Cincinnati, OH 45202  
Phone 859-685-1845  
Fax 859-268-3341**

**TO: Plan Holders**

---

This addendum forms a part of the Construction Documents and modifies the original bidding documents dated August 5, 2022. Each bidder shall acknowledge receipt of this addendum in the space provided on the Bid Form. Failure to do so may subject the Bidder to disqualification.

This Addendum consists of three (3) pages, and attachments.

**GENERAL ITEMS AND CLARIFICATIONS:**

1. All questions and substitution requests are due to the Architect by 12:00 p.m. on August 22, 2022. The final addendum will be issued on August 25, 2022 by 5:00 p.m.

2. No REVIT or AUTOCAD Files will be given out during the Bidding Process.

Drawing Files will be given only to the awarded contractor and sub-contractors after they are contracted with the owner and an Electronic Files Disclaimer has been signed by all contractors.

3. Refer to Fire Protection Drawing FP-101:

A. Add General Note #3 to read as follows: "ALL PIPING SHALL BE SUPPORTED AS REQUIRED FOR SEISMIC CATEGORY D ACCORDING TO ANSI STANDARDS FOR SEISMIC SUPPORTING OF PIPING."

B. Add General Note #4 to read as follows: "ANY PENETRATIONS THROUGH THE STORM SHELTER AT A SIZE LARGER THAN 3-1/2 SQUARE INCHES IN AREA FOR RECTANGULAR PENETRATIONS OR 2-1/16 INCHES IN DIAMETER SHALL BE CONSIDERED OPENINGS IN THE STORM SHELTER AND SHALL BE PROTECTED IN ACCORDANCE WITH ICC 500 STANDARDS. REFER TO ARCHITECTURAL PLANS FOR STORM SHELTER BOUNDARIES."

4. Refer to Plumbing Drawing P-101:

A. Add General Note #2 to read as follows: "ANY PENETRATIONS THROUGH THE STORM SHELTER AT A SIZE LARGER THAN 3-1/2 SQUARE INCHES IN AREA FOR RECTANGULAR PENETRATIONS OR 2-1/16 INCHES IN DIAMETER SHALL BE CONSIDERED OPENINGS IN THE STORM SHELTER AND SHALL BE PROTECTED IN ACCORDANCE WITH ICC 500 STANDARDS. REFER TO ARCHITECTURAL PLANS FOR STORM SHELTER BOUNDARIES."

B. All open receptacles within chases to have 12"x12" access panel for access to open receptacle.

5. Refer to Plumbing Drawing P-201:
  - A. Add General Note #2 to read as follows: "ALL PIPING SHALL BE SUPPORTED AS REQUIRED FOR SEISMIC CATEGORY D ACCORDING TO ANSI STANDARDS FOR SEISMIC SUPPORTING OF PIPING."
  - B. Add General Note #3 to read as follows: "ANY PENETRATIONS THROUGH THE STORM SHELTER AT A SIZE LARGER THAN 3-1/2 SQUARE INCHES IN AREA FOR RECTANGULAR PENETRATIONS OR 2-1/16 INCHES IN DIAMETER SHALL BE CONSIDERED OPENINGS IN THE STORM SHELTER AND SHALL BE PROTECTED IN ACCORDANCE WITH ICC 500 STANDARDS. REFER TO ARCHITECTURAL PLANS FOR STORM SHELTER BOUNDARIES."
  - C. Refer to Kitchenette 123. Coffee maker to have water line routed from S1 sink.
  - D. Refer to Kitchenette 164. Coffee maker to have water line routed from S1 sink.
6. Refer to Plumbing Drawing P-301:
  - A. Add General Note #3 to read as follows: "PAVILION SHOULD BE A CAPABLE OF FULL DRAIN DOWN AND FREEZE PROOFING DURING WINTER IF NEEDED."
7. Refer to Plumbing Drawing P-601:
  - A. Refer to Electric Water Heater Schedule. EWH-02 expansion tank to be ET-02.
  - B. Refer to Plumbing Fixture Schedule. S1 and S2 single bowl sinks to be changed to ELKAY model LRAD191865 or equivalent.
8. Refer to Mechanical Drawing M-101:
  - A. Add General Note #4 to read as follows: "ALL PIPING SHALL BE SUPPORTED AS REQUIRED FOR SEISMIC CATEGORY D ACCORDING TO ANSI STANDARDS FOR SEISMIC SUPPORTING OF PIPING."
  - B. Add General Note #5 to read as follows: "ANY PENETRATIONS THROUGH THE STORM SHELTER AT A SIZE LARGER THAN 3-1/2 SQUARE INCHES IN AREA FOR RECTANGULAR PENETRATIONS OR 2-1/16 INCHES IN DIAMETER SHALL BE CONSIDERED OPENINGS IN THE STORM SHELTER AND SHALL BE PROTECTED IN ACCORDANCE WITH ICC 500 STANDARDS. REFER TO ARCHITECTURAL PLANS FOR STORM SHELTER BOUNDARIES."
  - C. Intake and exhaust openings in storm shelter to be spaced 10'-0" apart minimum.
  - D. Provide fire dampers at outside air and exhaust duct penetrations through storm shelter. Refer to architectural plans for storm shelter boundaries.

**SUBSTITUTION REQUEST APPROVALS:**

*All substitutions are still bound by criteria set forth within specification and the drawings. No deviations from requirements will be accepted because of product substitution. Contractor is responsible for burden of proof of compliance with specification.*

1. World Dryer, and Saniflow Corp. is an acceptable provider of Electric hand dryers and Baby Changing Stations for Specification Section 102800 Toilet, Bath, and Laundry Accessories.
2. Henry is an acceptable provider of Bituminous Dampproofing for Specification Section 07113 Bituminous Dampproofing.
3. Allegion is an acceptable provider of Door Hardware for Specification Section 087100 Door Hardware.

4. Etch Wall Panels by Zintra is an acceptable provider of Acoustical Wall Panels for Specification Section 098433 Acoustical Wall Panel.
5. Oshkosh Door Company is an acceptable provider of Flush Wood Doors for Specification Section 081416 Flush Wood Doors.
6. W.R. Meadows, and Carlisle Coatings and Waterproofing is an acceptable provider of Fluid-applied membrane air barriers for Specification Section 072726 fluid-applied membrane air barriers.
7. W.R. Meadows is an acceptable provider of Fluid-applied waterproofing for Specification Section 071400 Fluid applied waterproofing.

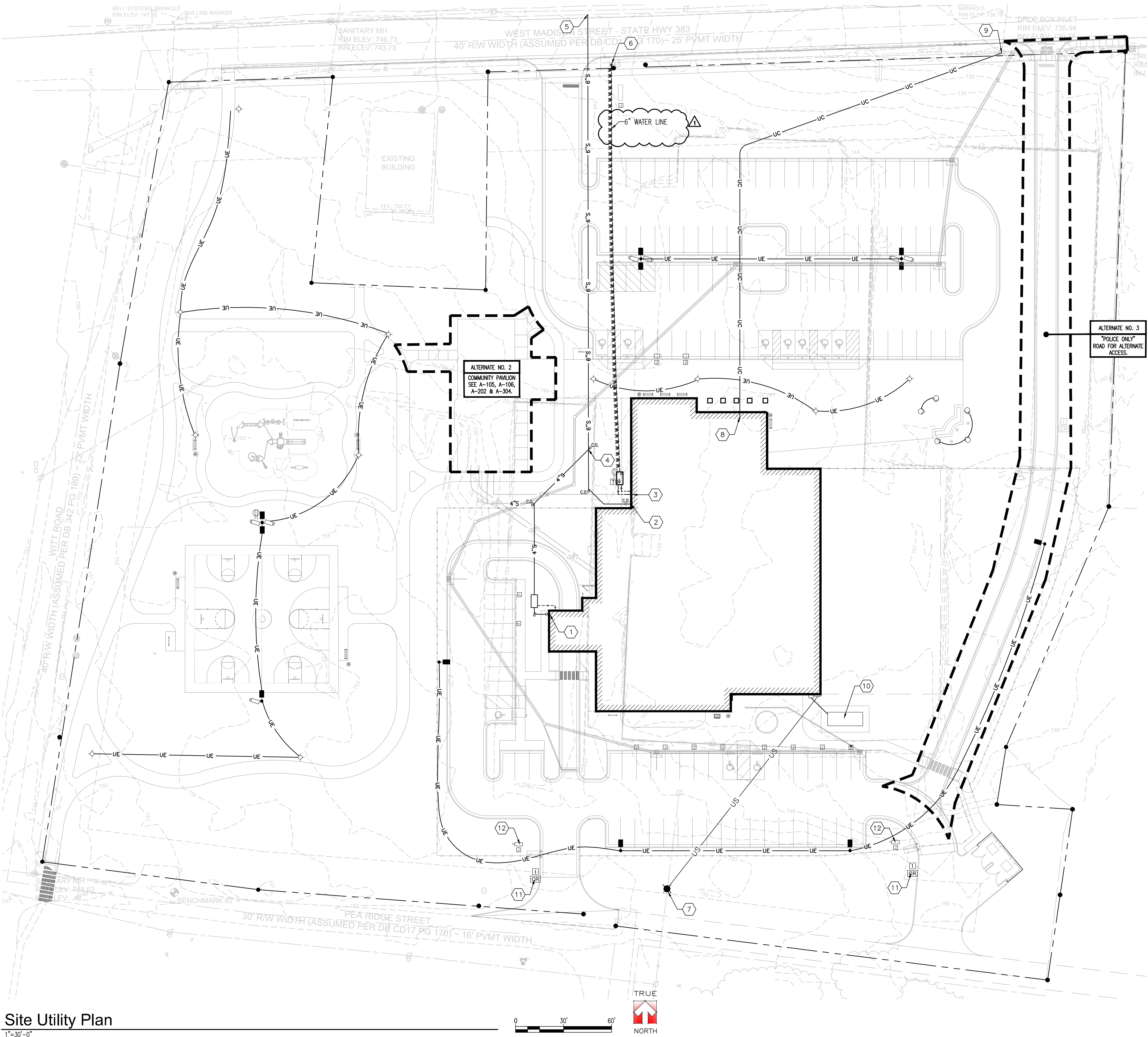
**CHANGES TO DRAWINGS:**

**1. Drawing Sheet – C-106 Site Utility Plan**

- A. See revised sheet for modified water line to 6".

**END OF ADDENDUM NO. 1**





Site Utility Plan

1"=30'-0"

General Notes

1. THE EXISTING UTILITY INFORMATION DEPICTED ON THIS PLAN ARE APPROXIMATE LOCATIONS. THE CONTRACTOR IS RESPONSIBLE FOR CONFIRMING THE LOCATIONS OF ALL EXISTING UTILITIES PRIOR TO DEMOLITION. ALL UNDERGROUND UTILITIES SHALL BE LOCATED TWO (2) WORKING DAYS BEFORE ANY EXCAVATION OCCURS.
2. EXISTING ABOVE GRADE AND UNDERGROUND UTILITIES ON SITE ARE TO BE PROPERLY DISCONNECTED, DISCONNECT FORM UTILITY POLES, ABOVE/GROUND WIRES, CABLES, GAS, WATER, SEWER, ELECTRIC AND TELEPHONE, COORDINATE WITH LOCAL UTILITY COMPANIES.
3. CONTRACTORS ARE ADVISED THAT CARE SHOULD BE EXERCISED DURING UNDERGROUND EXCAVATION IN THE EVENT THAT UTILITY LINES ARE PRESENT THAT ARE UNCHARTED.
4. IF, DURING THE CONSTRUCTION, INTERFERENCE ARISES WITH EXISTING UTILITIES IT SHALL BE THE RESPONSIBILITY OF THE CONTRACTOR TO NOTIFY THE UTILITY COMPANY INVOLVED. THE CONTRACTOR SHALL NOTIFY, AT LEAST (7) SEVEN DAYS BEFORE BREAKING GROUND, ALL PUBLIC SERVICE CORPORATIONS HAVING WIRES, POLES, PIPES, CONDUITS, MANHOLES, OR OTHER STRUCTURES THAT MAY BE AFFECTED BY THIS OPERATION, INCLUDING ALL STRUCTURES WHICH ARE AFFECTED AND NOT SHOWN ON THESE PLANS. THERE WILL BE NO DELAYS ALLOWED FOR UTILITY INTERFERENCES.
5. THE INSTALLING CONTRACTOR SHALL COORDINATE INCOMING DOMESTIC AND FIRE PROTECTION LINES WITH BUILDING AND PLUMBING CONTRACTORS.
6. CALL BEFORE YOU DIG (811).
7. CONTRACTOR TO PAY FOR SEWER TAP FEES AND VERIFY WITH DIVISION OF ENGINEERING IF ANY OTHER PERIMETER SEWER SYSTEM FEES ARE REQUIRED AND PAY IF SO.
8. THE CONTRACTOR SHALL BE RESPONSIBLE FOR ANY AND ALL MODIFICATIONS TO EXISTING PIPING REQUIRED TO ACCOMMODATE NEW PIPING, STRUCTURES OR OTHER RELATED CONSTRUCTION ISSUES.
9. THE CONTRACTOR SHALL EXPOSE EXISTING PIPING (TO VERIFY EXACT LOCATIONS) PRIOR TO PLACEMENT OF NEW PIPING. IF EXISTING CONDITIONS PRESENT PROBLEMS RELATIVE TO DESIGN INTENT, CONTACT ENGINEER FOR APPROVAL OF PROPOSED DEVIATION FROM PLANS. HORIZONTAL AND VERTICAL ALIGNMENT OF PIPING SHALL BE CONSISTENT WITH PLANS UNLESS APPROVED BY ENGINEER.
10. PIPING INDICATED ON SITE PLAN(S) IS TO AN EXTENT SCHEMATIC IN NATURE. NEW PIPING INDICATED MAY REQUIRE SHIFTING TO AVOID CONFLICT WITH EXISTING PIPING, UTILITIES, AND/OR SITE FEATURES. FITTINGS ARE NOT SHOWN. THE CONTRACTOR SHALL PROVIDE ALL FITTINGS REQUIRED (INCLUDING FITTINGS REQUIRED TO TRANSITION OVER NEW AND EXISTING PIPING).
11. ALL SITE PIPING SHALL BE INSTALLED WITH A MINIMUM OF 36" OF COVER UNLESS NOTED OTHERWISE.
12. PRESSURE PIPING SHALL BE PLACED USING A UNIFORM SLOPE EXCEPT WHERE NECESSARY TO AVOID EXISTING PIPING.
13. PIPE TRENCHES IN ROADS SHALL BE BACKFILLED WITH NO.9 CRUSHED STONE, COMPACTED IN 6" LIFTS (UNLESS NOTED OTHERWISE).

Coded Notes

- 1 4" SANITARY CONNECTION INTO BUILDING - REFER TO PLUMBING PLANS.
- 2 6" SANITARY CONNECTION INTO BUILDING - REFER TO PLUMBING PLANS.
- 3 DOMESTIC WATER CONNECTION INTO BUILDING - REFER TO PLUMBING PLANS.
- 4 4" SANITARY CONNECTION TO 6" SANITARY LINE.
- 5 CONNECT SANITARY INTO EXISTING SANITARY MAIN. CONTRACTOR TO VERIFY INVERT AND COORDINATE WITH UTILITY COMPANY.
- 6 CONNECTION INTO EXISTING WATER MAIN, TAPPING VALVE AND SLEEVE, SIZED TO EXISTING LINE. CONTRACTOR TO VERIFY LOCATION AND COORDINATE WITH UTILITY COMPANY.
- 7 NEW UTILITY POLE - REFER TO SITE ELECTRICAL PLAN.
- 8 TELECOMMUNICATIONS CONNECTION INTO BUILDING.
- 9 REFER TO SITE ELECTRICAL PLANS FOR COMMUNICATIONS CONNECTION TO POLE.
- 10 GENERATOR PAD - REFER TO ELECTRICAL PLANS.
- 11 CARD READER - REFER TO ELECTRICAL PLANS.
- 12 REFER TO SITE ELECTRICAL PLANS FOR SUPPORT AND CONNECTION TO GATE OPERATOR.

Legend

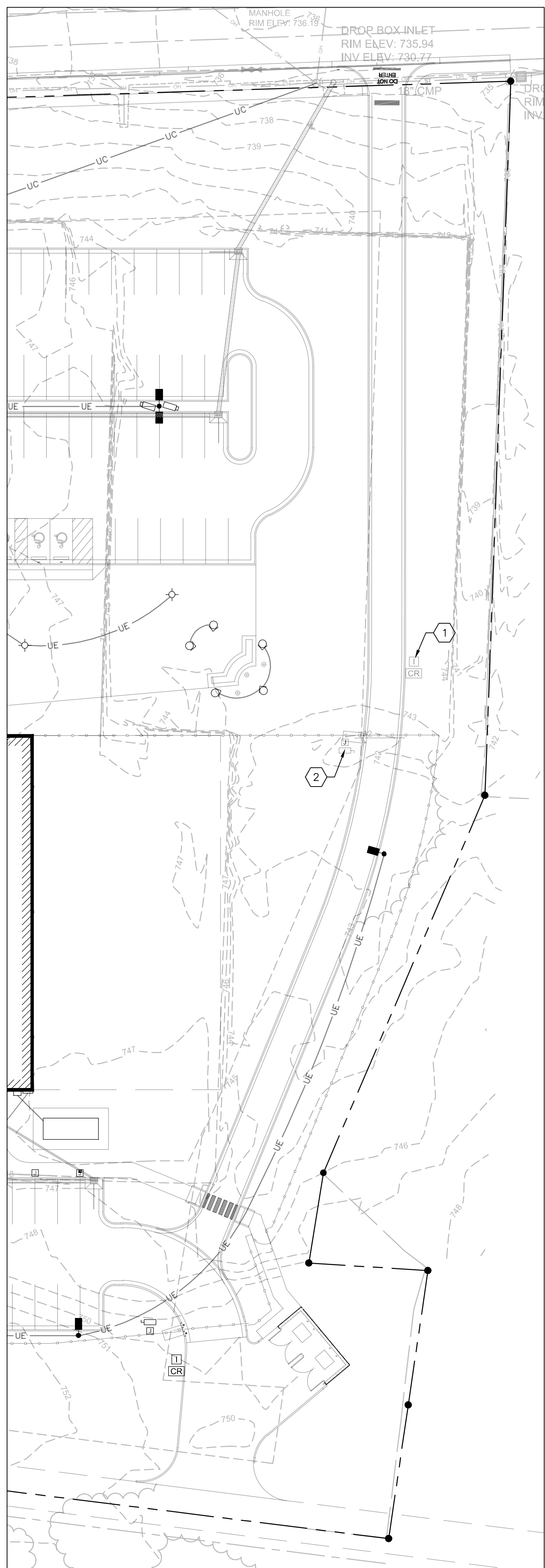
C.O.	CLEAN OUT
4" W	4" WATER LINE
4"S	4" SANITARY SEWER LINE
6"S	6" SANITARY SEWER LINE
UE	UNDERGROUND ELECTRICAL LINE
UC	UNDERGROUND TELECOMMUNICATION LINE
US	UNDERGROUND SECONDARY ELECTRICAL LINE
Light Stanchions	REFER TO ELEC. PLANS

Coded Notes - Alt. 2

- 1 4" SANITARY CONNECTION TO PAVILION - REFER TO PLUMBING PLANS (ALTERNATE 2).
- 2 UNDERGROUND COMMUNICATIONS TO PAVILION - REFER TO ELECTRICAL PLANS (ALTERNATE 2)
- 3 UNDERGROUND ELECTRICAL CONNECTION TO PAVILION - REFER TO ELECTRICAL PLANS (ALTERNATE 2)
- 4 WATER CONNECTION TO PAVILION - REFER TO PLUMBING PLANS (ALTERNATE 2)
- 5 4" PAVILION SANITARY CONNECTION INTO JOINT LINE

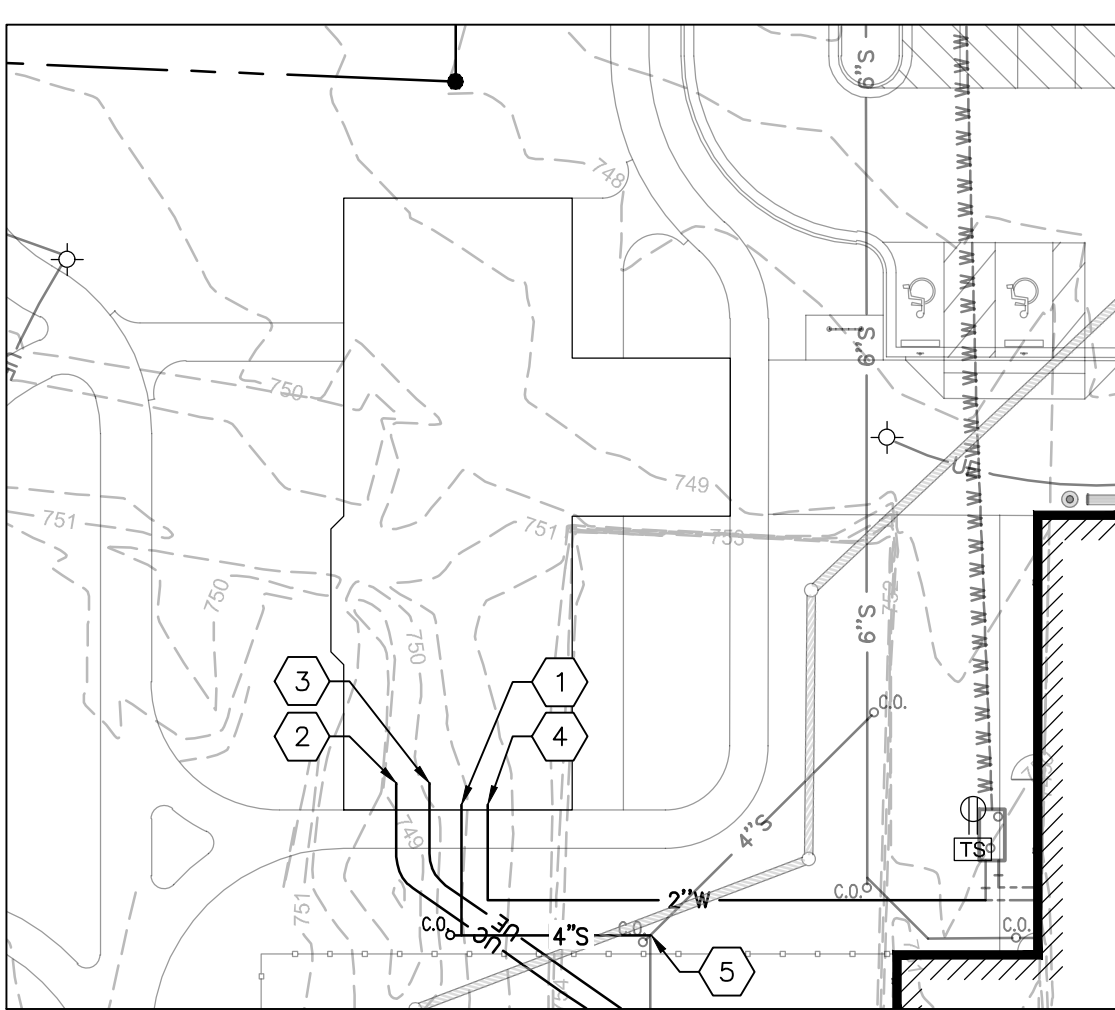
Coded Notes - Alt. 3

- 1 CARD READER - REFER TO ELECTRICAL PLANS.
- 2 REFER TO SITE ELECTRICAL PLANS FOR SUPPORT AND CONNECTION TO GATE OPERATOR.



Site Utilities Plan - Alternate 2

1"=30'-0"



Site Utilities Plan - Alternate 3

1"=30'-0"

